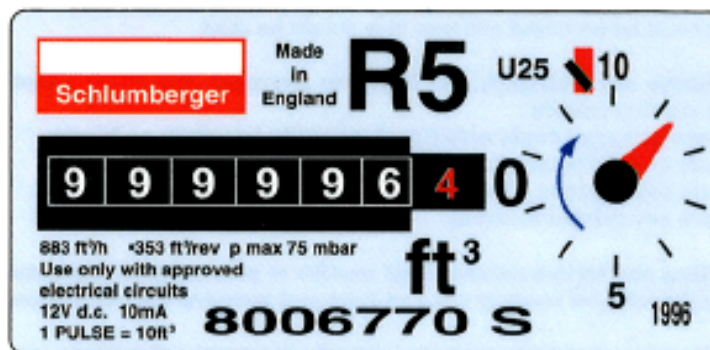


HOW TO READ YOUR GAS METER

By submitting actual meter reads at the end of every month, you'll be able to ensure your gas bills are accurate and reflect the energy that you have actually consumed.

HOW TO READ YOUR GAS METER

- Record principal digits only (black on white/ or white on black)
- Ignore any red digits
- Ignore any digits in a red surround
- Ignore any printed or fixed zero(es)
- The example meter reading below should be - 999996
- The reading units of x100 will be taken into account



Please email your meter reads to meterreadings@gdfsuezuk.com quoting your MPR (Meter Point Reference Number), your site ID which appears on your invoice and your meter serial number which appears on your gas meter.